

Quarterly Population Highlights

Reference date: December 2017 Issue #17-04

Released: March 27, 2018

B.C. Highlights

The population of B.C. was estimated at 4,849,442 as of January 1, 2018, growing by 8,364 persons in the fourth quarter of 2017 (up 0.17% from October 1, 2017).

Combined net in-migration from all sources (interprovincial and international) totalled 7,174 persons during the fourth quarter of 2017, higher than the same quarter in 2016. Broken down, net interprovincial in-migration contributed 854 persons to population growth while net international in-migration added 6,320 persons, mainly due to the number immigrants. Rounding out the fourth quarter growth was a natural increase (births minus deaths) of 1,190 persons.

The Last Twelve Months

B.C.'s total population grew by 65,981 persons (+1.38%) over the twelve months ending December 31, 2017, mostly attributed to international and interprovincial migration. On an annual basis, births (+44,375) and interprovincial arrivals (+60,452) were the largest sources of population growth for the province. Net interprovincial migration accounted for a gain of 10,202 and net international migration 49,590 persons from January 1, 2017 to December 31, 2017. More than nine in every ten persons added since January 1, 2017 could be attributed to total net migration (+59,792). The remainder was due to natural increase (+6,189).

B.C. population October 1, 2017	4,841,078
Interprovincial migration	+ 854
Add interprovincial arrivals	+ 9,305
Minus interprovincial exits	- 8,451
International migration	+ 6,320
Add immigrants	+ 8,952
Minus total net emigrants	- 3,698
Net change in non-permanent residents	+ 1,066
Natural change	+1,190
Add births	+ 10,827
Minus deaths	- 9,637
Net Change	+ 8,364
B.C. population January 1, 2018	4,849,442

National Overview

The population of Canada grew by an estimated 78,805 persons (+0.21%) to 36,963,854 during the fourth quarter of 2017, a slightly higher growth than in the same quarter of 2016. Leading the growth at the provincial and territorial level were Yukon Territory (+0.40%), Alberta (+0.30%), and Ontario (+0.28%). British Columbia ranked fifth when compared to other jurisdictions. Manitoba, Quebec and Saskatchewan also observed population increases during the fourth quarter. All remaining jurisdictions showed population declines in the fourth quarter.

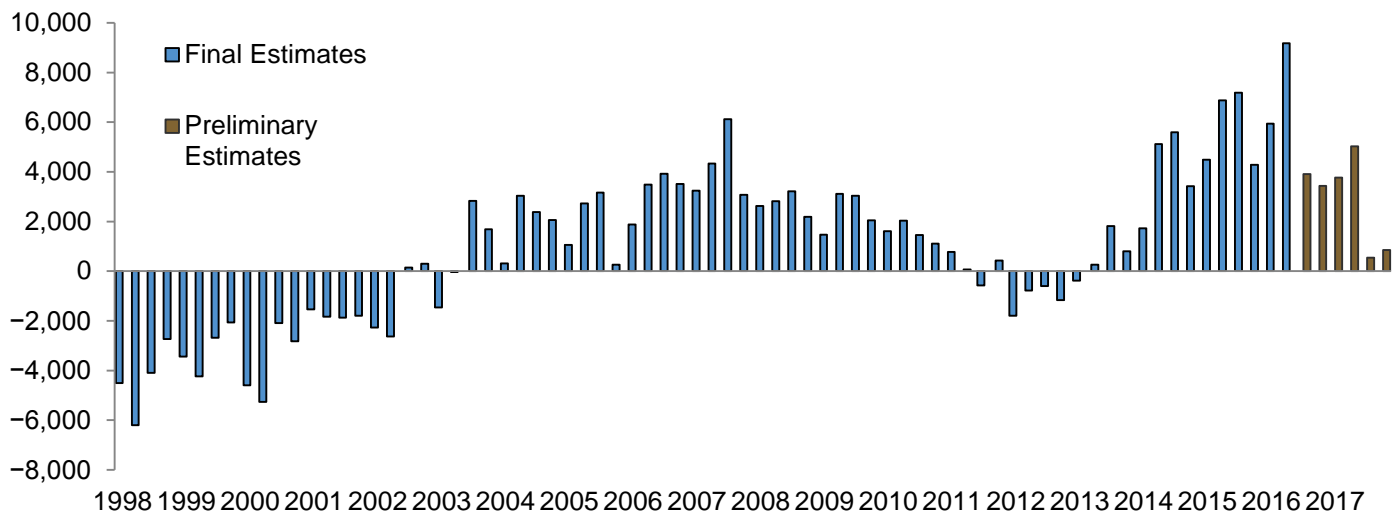
Fourth Quarter International Migration

Net international in-migration to British Columbia (immigrants plus the net change in NPRs plus returning emigrants less emigrants and persons temporarily abroad) resulted in a gain of 6,320 in the fourth quarter. This compares to a net loss of 107 in the fourth quarter of 2016. The total number of immigrants arriving in British Columbia from October 1 to December 31 was 8,952. A net gain of 1,066 NPRs further increased net international in-migration. In comparison, a net loss of 3,179 NPRs occurred during the same quarter of 2016. With regard to persons leaving B.C. for international destinations, an estimated 3,357 left on a permanent basis and 1,334 were away temporarily in the fourth quarter of 2017.

Fourth Quarter Interprovincial Migration

British Columbia had the second largest net gain in population from other provinces and territories in the fourth quarter of 2017, behind Ontario. In B.C., an inflow of 9,305 persons was offset by an outflow of 8,451 for a net gain of 854. British Columbia's net exchange with Alberta was positive, with an estimated 769 more persons leaving Alberta for B.C. than those departing for Alberta. In addition, B.C. reported positive net in-migration from Manitoba (+415), Saskatchewan (+339) and Northwest Territories (+78) as well as small gains from Quebec, Prince Edward Island and Nunavut. British Columbia's exchange with the remaining jurisdictions was negative in the fourth quarter. Ontario was the highest net recipient of interprovincial migration in the fourth quarter of 2017 with a gain of 4,376.

B.C. Net Interprovincial Migration by Quarter, Q1 1998 to Q4 2017



Source: Statistics Canada. Table 051-0017 Interprovincial Migrants, Canada, provinces and territories, CANSIM. Last updated March 22, 2018.

Visit the [Demography](#) page on the BC Stats website for more information.

Did You Know?

On November 1, 2017, the Government of Canada announced a historic, multi-year [immigration levels plan](#). The new plan sets out the highest levels of new permanent residents to be welcomed to Canada in recent history. Under the plan, Canada will accept 310,000 new permanent residents in 2018 and that number will grow to 340,000 by 2020.

Table 1: Provincial migration flow (October - December 2017)

		Destination												
		Nfld	PEI	NS	NB	Que	Ont	Man	Sask	Alta	BC	Yukon	NWT	Nvt
Origin	Nfld	—	79	165	34	26	593	10	23	476	65	—	5	—
	PEI	5	—	88	115	—	386	5	8	100	124	—	—	—
	NS	95	66	—	259	156	1,045	5	76	684	101	—	—	16
	NB	48	100	470	—	192	600	31	18	323	70	8	—	—
	Que	29	43	127	270	—	3,646	41	85	367	591	—	10	17
	Ont	398	126	1,031	497	2,509	—	580	484	2,744	2,445	73	68	—
	Man	17	—	27	49	44	1,316	—	310	977	632	—	19	8
	Sask	48	—	80	60	156	943	293	—	2,057	683	—	3	—
	Alta	236	85	438	420	590	3,396	342	1,182	—	4,392	75	57	—
	BC	75	76	319	107	531	3,043	217	344	3,623	—	106	10	—
	Yukon	—	—	13	—	—	105	—	—	46	87	—	4	—
	NWT	5	6	24	8	6	104	16	7	113	88	22	—	—
	Nvt	5	—	26	10	24	154	4	6	5	27	—	7	—
Inflow	961	581	2,808	1,829	4,234	15,331	1,544	2,543	11,515	9,305	284	183	41	
Outflow	1,476	831	2,503	1,860	5,226	10,955	3,399	4,323	11,213	8,451	255	399	268	
Net interprovincial	- 515	- 250	305	- 31	- 992	4,376	- 1,855	- 1,780	302	854	29	- 216	- 227	
Net international										6,320				
Total net										7,174				

Table 2: Quarterly components of population change in British Columbia

Year	Quarter	Interprovincial			International							Births	Deaths	Natural increase	Total increase	Population at end of quarter	Annual growth rate (%)
		In	Out	Net	Immigrants	Emigrants	Net NPR	Temporary abroad	Returning emigrants	Net	Total net migration						
2000	1	9,272	13,871	- 4,599	8,610	1,546	1,950	1,253	396	8,157	3,558	10,162	7,282	2,880	6,438	4,033,319	0.8
2000	2	11,413	16,679	- 5,266	9,495	2,092	260	1,428	732	6,967	1,701	10,682	6,688	3,994	5,695	4,039,230	0.7
2000	3	15,001	17,096	- 2,095	10,316	3,517	2,320	2,002	956	8,073	5,978	10,378	6,508	3,870	9,848	4,049,297	0.7
2000	4	8,323	11,146	- 2,823	8,992	1,939	75	1,444	385	6,069	3,246	9,450	6,983	2,467	5,713	4,055,229	0.7
	Total	44,009	58,792	- 14,783	37,413	9,094	4,605	6,127	2,469	29,266	14,483	40,672	27,461	13,211	27,694		
2001	1	8,597	10,134	- 1,537	9,428	1,375	2,402	1,244	385	9,596	8,059	9,941	7,311	2,630	10,689	4,066,132	0.8
2001	2	11,417	13,248	- 1,831	10,807	1,748	2,113	1,376	742	10,538	8,707	10,598	7,013	3,585	12,292	4,076,881	0.9
2001	3	16,029	17,902	- 1,873	10,529	5,031	4,922	1,512	1,421	10,329	8,456	10,444	6,794	3,650	12,106	4,085,760	0.9
2001	4	8,365	10,152	- 1,787	7,720	3,261	239	1,057	699	4,340	2,553	9,592	7,244	2,348	4,901	4,087,435	0.8
	Total	44,408	51,436	- 7,028	38,484	11,415	9,676	5,189	3,247	34,803	27,775	40,575	28,362	12,213	39,988		
2002	1	9,244	11,516	- 2,272	9,573	1,530	2,703	1,006	617	10,357	8,085	9,605	7,672	1,933	10,018	4,094,296	0.7
2002	2	13,521	16,145	- 2,624	10,202	1,943	297	1,364	1,186	8,378	5,754	10,291	6,989	3,302	9,056	4,100,161	0.6
2002	3	16,089	15,936	153	7,992	4,615	3,746	1,497	1,747	7,373	7,526	10,470	6,854	3,616	11,142	4,108,076	0.5
2002	4	8,925	8,627	298	6,290	3,110	- 409	1,022	805	2,554	2,852	9,699	7,369	2,330	5,182	4,110,032	0.6
	Total	47,779	52,224	- 4,445	34,057	11,198	6,337	4,889	4,355	28,662	24,217	40,065	28,884	11,181	35,398		
2003	1	8,685	10,145	- 1,460	7,954	2,407	1,582	1,086	931	6,974	5,514	9,813	7,546	2,267	7,781	4,114,657	0.5
2003	2	14,379	14,407	- 28	9,688	2,315	1,407	1,337	1,430	8,873	8,845	10,552	6,925	3,627	12,472	4,123,937	0.6
2003	3	15,923	13,093	2,830	9,459	4,099	1,374	1,558	1,828	7,004	9,834	10,395	6,972	3,423	13,257	4,133,968	0.6
2003	4	9,295	7,612	1,683	8,132	3,433	657	1,028	797	5,125	6,808	9,737	7,877	1,860	8,668	4,139,409	0.7
	Total	48,282	45,257	3,025	35,233	12,254	5,020	5,009	4,986	27,976	31,001	40,497	29,320	11,177	42,178		
2004	1	9,984	9,674	310	8,966	2,746	1,098	1,010	762	7,070	7,380	9,740	7,840	1,900	9,280	4,145,498	0.7
2004	2	15,204	12,162	3,042	10,155	3,204	- 509	1,345	1,412	6,509	9,551	10,334	7,174	3,160	12,711	4,155,017	0.8
2004	3	15,109	12,731	2,378	10,362	3,909	2,830	1,544	2,148	9,887	12,265	10,394	7,223	3,171	15,436	4,167,227	0.8
2004	4	10,760	8,705	2,055	7,543	2,969	754	1,039	979	5,268	7,323	10,022	7,687	2,335	9,658	4,173,658	0.8
	Total	51,057	43,272	7,785	37,026	12,828	4,173	4,938	5,301	28,734	36,519	40,490	29,924	10,566	47,085		
2005	1	11,239	10,184	1,055	10,505	2,398	1,537	1,017	928	9,555	10,610	9,761	8,118	1,643	12,253	4,182,755	0.9
2005	2	17,172	14,446	2,726	12,167	2,758	582	1,338	1,671	10,324	13,050	10,455	7,305	3,150	16,200	4,195,764	1.0
2005	3	16,631	13,459	3,172	12,450	3,454	2,969	1,576	2,574	12,963	16,135	10,745	7,111	3,634	19,769	4,212,306	1.1
2005	4	8,948	8,689	259	9,653	2,899	- 483	1,006	1,045	6,310	6,569	9,866	7,701	2,165	8,734	4,217,814	1.1
	Total	53,990	46,778	7,212	44,775	11,509	4,605	4,937	6,218	39,152	46,364	40,827	30,235	10,592	56,956		
2006	1	12,294	10,411	1,883	10,270	2,401	1,734	1,025	1,091	9,669	11,552	9,858	8,054	1,804	13,356	4,228,013	1.1
2006	2	15,223	11,737	3,486	11,473	2,769	639	1,334	1,922	9,931	13,417	10,723	7,445	3,278	16,695	4,241,691	1.1
2006	3	19,163	15,244	3,919	11,021	3,648	3,552	2,094	2,965	11,796	15,715	10,951	7,263	3,688	19,403	4,258,216	1.1
2006	4	12,150	8,639	3,511	9,321	3,102	- 1,913	1,112	847	4,041	7,552	10,197	7,926	2,271	9,823	4,265,161	1.1
	Total	58,830	46,031	12,799	42,085	11,920	4,012	5,565	6,825	35,437	48,236	41,729	30,688	11,041	59,277		
2007	1	11,705	8,467	3,238	7,972	2,734	4,274	1,126	876	9,262	12,500	10,108	8,177	1,931	14,431	4,276,777	1.2
2007	2	15,164	10,827	4,337	9,497	2,836	2,425	1,430	1,533	9,189	13,526	11,123	7,591	3,532	17,058	4,290,988	1.2
2007	3	19,576	13,449	6,127	12,208	3,525	4,751	1,802	2,165	13,797	19,924	11,577	7,563	4,014	23,938	4,312,048	1.3
2007	4	10,587	7,513	3,074	9,293	2,895	- 1,467	1,204	969	4,696	7,770	10,841	7,977	2,864	10,634	4,319,805	1.3
	Total	57,032	40,256	16,776	38,970	11,990	9,983	5,562	5,543	36,944	53,720	43,649	31,308	12,341	66,061		
2008	1	11,851	9,224	2,627	10,127	2,353	2,919	1,197	955	10,451	13,078	10,486	8,574	1,912	14,990	4,331,948	1.3
2008	2	15,382	12,567	2,815	11,592	2,517	4,926	1,558	1,678	14,121	16,936	11,238	7,863	3,375	20,311	4,349,412	1.4
2008	3	16,951	13,739	3,212	12,714	3,293	7,670	1,799	2,038	17,330	20,542	11,738	7,565	4,173	24,715	4,371,250	1.4
2008	4	9,479	7,284	2,195	9,569	2,673	2,305	1,194	896	8,903	11,098	10,814	8,095	2,719	13,817	4,382,189	1.4
	Total	53,663	42,814	10,849	44,002	10,836	17,820	5,748	5,567	50,805	61,654	44,276	32,097	12,179	73,833		
2009	1	11,143	9,672	1,471	9,244	2,275	5,643	1,224	952	12,340	13,811	10,710	8,256	2,454	16,265	4,395,638	1.5
2009	2	13,488	10,371	3,117	10,848	2,094	2,093	1,547	1,562	10,862	13,979	11,428	7,520	3,908	17,887	4,410,679	1.4
2009	3	14,579	11,543	3,036	12,116	2,989	7,119	1,754	2,109	16,601	19,637	11,937	7,674	4,263	23,900	4,431,701	1.4
2009	4	8,899	6,851	2,048	9,231	2,647	1,477	1,217	1,014	7,858	9,906	10,918	7,990	2,928	12,834	4,441,657	1.4
	Total	48,109	38,437	9,672	41,439	10,005	16,332	5,742	5,637	47,661	57,333	44,993	31,440	13,553	70,886		

Table 2: Quarterly components of population change in British Columbia

Year	Quarter	Interprovincial			International							Total net migration	Births	Deaths	Natural increase	Total increase	Population at end of quarter	Annual growth rate (%)
		In	Out	Net	Immigrants	Emigrants	Net NPR	Temporary abroad	Returning emigrants	Net								
2010	1	11,474	9,861	1,613	9,629	2,488	4,202	1,199	977	11,121	12,734	10,568	7,896	2,672	15,406	4,454,248	1.3	
2010	2	14,517	12,486	2,031	12,895	2,431	-1,535	1,592	1,776	9,113	11,144	11,218	7,839	3,379	14,523	4,465,924	1.3	
2010	3	14,420	12,957	1,463	13,508	3,615	5,225	1,791	1,916	15,243	16,706	11,386	7,461	3,925	20,631	4,483,677	1.2	
2010	4	9,639	8,534	1,105	8,153	2,682	-7,222	1,198	857	-2,092	-987	10,654	8,128	2,526	1,539	4,482,338	0.9	
	Total	50,050	43,838	6,212	44,185	11,216	670	5,780	5,526	33,385	39,597	43,826	31,324	12,502	52,099			
2011	1	10,899	10,119	780	7,614	2,499	1,316	1,190	841	6,082	6,862	10,531	8,273	2,258	9,120	4,488,643	0.8	
2011	2	12,896	12,823	73	9,671	2,524	1,033	1,584	1,548	8,144	8,217	11,337	7,838	3,499	11,716	4,499,139	0.7	
2011	3	15,465	16,041	-576	9,882	3,787	10,997	1,701	2,063	17,454	16,878	11,779	7,497	4,282	21,160	4,520,299	0.8	
2011	4	9,757	9,323	434	7,619	3,350	-1,033	1,384	894	2,746	3,180	10,482	8,356	2,126	5,306	4,525,605	1.0	
	Total	49,017	48,306	711	34,786	12,160	12,313	5,859	5,346	34,426	35,137	44,129	31,964	12,165	47,302			
2012	1	10,753	12,542	-1,789	8,658	2,919	1,876	1,340	900	7,175	5,386	10,403	8,377	2,026	7,412	4,533,017	1.0	
2012	2	15,695	16,475	-780	10,087	2,676	3,267	1,340	1,634	10,972	10,192	11,104	8,023	3,081	13,273	4,546,290	1.0	
2012	3	14,439	15,034	-595	9,029	3,559	10,078	1,664	2,227	16,111	15,516	11,539	7,680	3,859	19,375	4,565,665	1.0	
2012	4	7,404	8,562	-1,158	8,468	2,880	-3,845	1,341	848	1,250	92	10,962	8,444	2,518	2,610	4,568,275	0.9	
	Total	48,291	52,613	-4,322	36,242	12,034	11,376	5,685	5,609	35,508	31,186	44,008	32,524	11,484	42,670			
2013	1	9,975	10,358	-383	8,105	3,322	2,582	1,382	825	6,808	6,425	10,664	8,673	1,991	8,416	4,576,691	1.0	
2013	2	16,690	16,422	268	10,134	2,727	2,605	1,376	1,586	10,222	10,490	11,016	8,116	2,900	13,390	4,590,081	1.0	
2013	3	14,145	12,323	1,822	8,928	3,562	11,710	1,622	2,535	17,989	19,811	11,545	7,778	3,767	23,578	4,613,659	1.1	
2013	4	9,362	8,555	807	9,045	3,596	-4,970	1,372	876	-17	790	10,554	8,633	1,921	2,711	4,616,370	1.1	
	Total	50,172	47,658	2,514	36,212	13,207	11,927	5,752	5,822	35,002	37,516	43,779	33,200	10,579	48,095			
2014	1	12,352	10,629	1,723	9,562	3,062	3,010	1,383	856	8,983	10,706	10,571	8,657	1,914	12,620	4,628,990	1.1	
2014	2	21,302	16,179	5,123	9,936	2,830	1,942	1,386	1,572	9,234	14,357	11,127	8,012	3,115	17,472	4,646,462	1.2	
2014	3	16,558	10,964	5,594	7,989	3,866	10,974	1,678	2,655	16,074	21,668	11,674	7,998	3,676	25,344	4,671,806	1.3	
2014	4	10,820	7,401	3,419	7,687	3,338	-6,934	1,334	993	-2,926	493	10,868	8,958	1,910	2,403	4,674,209	1.3	
	Total	61,032	45,173	15,859	35,174	13,096	8,992	5,781	6,076	31,365	47,224	44,240	33,625	10,615	57,839			
2015	1	15,016	10,524	4,492	6,784	3,148	-1,980	1,373	909	1,192	5,684	10,586	9,088	1,498	7,182	4,681,391	1.1	
2015	2	23,313	16,439	6,874	9,220	2,815	-3,091	1,378	1,898	3,834	10,708	11,211	8,611	2,600	13,308	4,694,699	1.0	
2015	3	19,017	11,834	7,183	10,899	3,880	2,623	1,678	2,655	10,619	17,802	11,678	8,307	3,371	21,173	4,715,872	0.9	
2015	4	11,029	6,751	4,278	8,846	3,351	-8,422	1,334	993	-3,268	1,010	10,722	9,046	1,676	2,686	4,718,558	0.9	
	Total	68,375	45,548	22,827	35,749	13,194	-10,870	5,763	6,455	12,377	35,204	44,197	35,052	9,145	44,349			
2016	1	15,673	9,734	5,939	11,764	3,161	-490	1,373	909	7,649	13,588	10,799	9,413	1,386	14,974	4,733,532	1.1	
2016	2	22,690	13,517	9,173	11,729	2,826	2,751	1,378	1,898	12,174	21,347	11,413	8,634	2,779	24,126	4,757,658	1.3	
2016	3	17,965	14,048	3,917	7,821	3,887	9,107	1,678	2,655	14,018	17,935	11,996	8,626	3,370	21,305	4,778,963	1.3	
2016	4	10,279	6,838	3,441	6,770	3,357	-3,179	1,334	993	-107	3,334	10,943	9,779	1,164	4,498	4,783,461	1.4	
	Total	66,607	44,137	22,470	38,084	13,231	8,189	5,763	6,455	33,734	56,204	45,151	36,452	8,699	64,903			
2017	1	14,799	11,028	3,771	10,634	3,167	1,665	1,373	909	8,668	12,439	10,700	10,709	-9	12,430	4,795,891	1.3	
2017	2	22,076	17,042	5,034	10,163	2,833	6,253	1,378	1,898	14,103	19,137	11,125	8,993	2,132	21,269	4,817,160	1.3	
2017	3	14,272	13,729	543	8,707	3,887	14,702	1,678	2,655	20,499	21,042	11,723	8,847	2,876	23,918	4,841,078	1.3	
2017	4	9,305	8,451	854	8,952	3,357	1,066	1,334	993	6,320	7,174	10,827	9,637	1,190	8,364	4,849,442	1.4	
	Total	60,452	50,250	10,202	38,456	13,244	23,686	5,763	6,455	49,590	59,792	44,375	38,186	6,189	65,981			

Prepared by: Demographic Analysis, BC Stats

Date: March 2018

Data source: Statistics Canada

Note: Net NPR denotes the net change in Non-Permanent Residents.
 Due to revisions on the part of Statistics Canada, the sum of the components may not equal the population change.
 "-" indicates no data available. All figures subject to revision.